



Escalon
Presbyterian
Capital Campaign



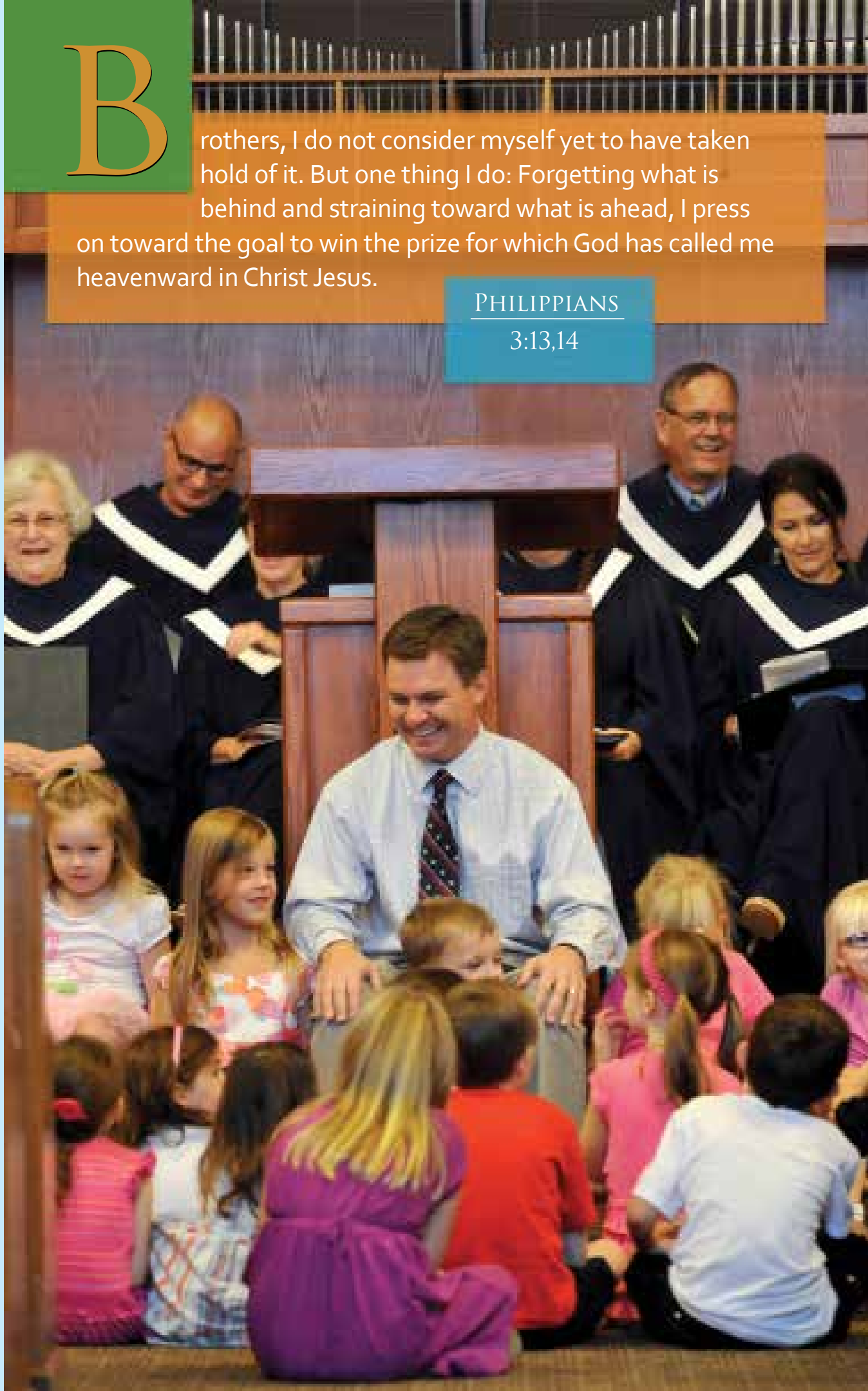
B

rothers, I do not consider myself yet to have taken hold of it. But one thing I do: Forgetting what is behind and straining toward what is ahead, I press on toward the goal to win the prize for which God has called me heavenward in Christ Jesus.

PHILIPPIANS

3:13,14

THIS IS NOT AN ERROR - THIS COLOR BAR IS SUPPOSED TO PRING



FORWARD IN FAITH

IT'S TIME - I'M READY.

Five years ago, our leadership took a large step of faith. Committed to staying here on First Street - a property we have occupied since 1915 - they voted to purchase an adjoining property to accommodate **needed** ministry **space** expansion. They decided to step forward in faith - refusing to simply stand still. The congregation enthusiastically supported this first step.

Many more steps have been taken since. The church prepared the property for expansion. It formulated a Master Plan Task Force who developed a skeleton plan for expansion, hired an architect and worked with functional ministry groups in the congregation for feedback (*see "2014 Master Plan"*). Now, five years later, we find ourselves needing to take one more important step of faith for that vision to become a reality. We need to step forward in faith financially.

IT'S TIME - I'M READY.

I believe in this next step. It is being offered to you after responsible discernment and persistent development. It's a step to make sure that everyone who has a seat in our worship has a seat in our fellowship together. It's a step to make sure that every child in our ministry has a seat in a space devoted to their Christian education. It's a step to make sure our mission outreach can take even greater risks as we seek to serve those beyond our church walls. It's a step that we believe we can take together.

Please join me in praying about this opportunity to move forward in faith into the next 100 years of mission and ministry at Escalon Presbyterian Church. If the Lord wills this and says "*it's time,*" may we be ready.

Forward in our Faith in Christ

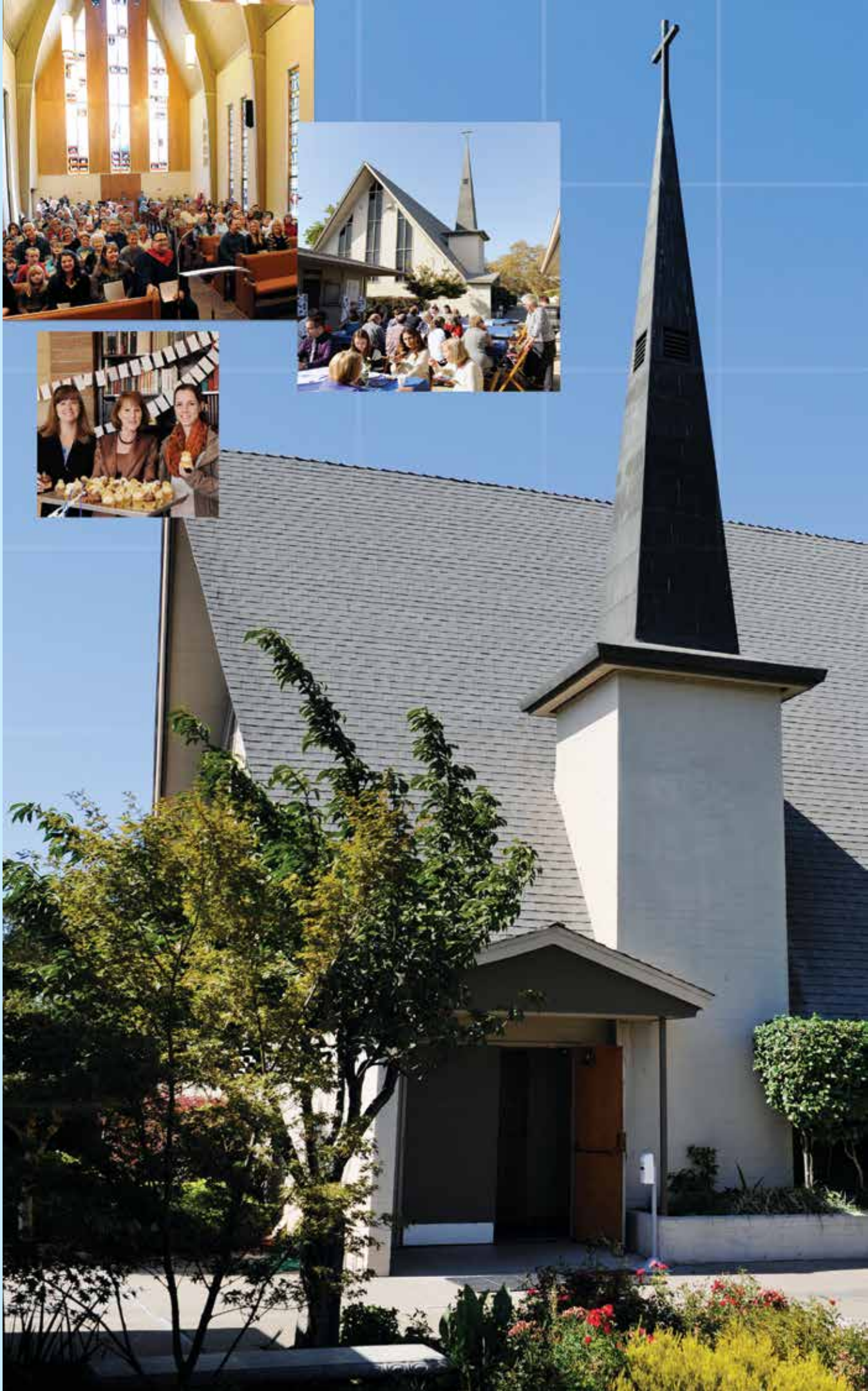


TROY ONSAGER

Pastor

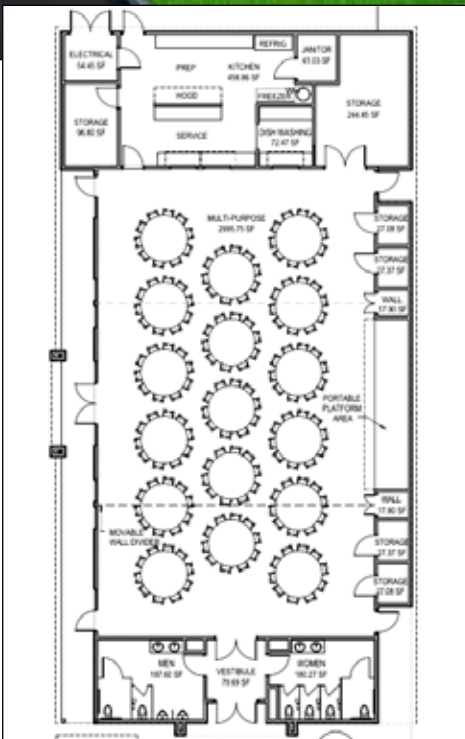
THIS IS NOT AN ERROR - THIS COLOR BAR IS SUPPOSED TO PRINT

THIS IS NOT AN ERROR - THIS COLOR BAR IS SUPPOSED TO PRING



WHAT ARE WE DOING?

- This campaign is intended to raise funds for a new multi-purpose facility.
- A successful campaign will enable us to remodel the Faith Center for needed classroom and storage and youth group ministry expansion.
- This campaign's goal is to be debt free in four years.
- This campaign is the first phase of a Facilities Master Plan presented to the congregation in 2014.



(Artist rendering & floor plan for Multi-purpose Facility)



JERRY HOUGLAND
Capital Campaign Co-Chair

"I am a firm believer in the wisdom of this expansion program because I want to participate in both the future growth and the present success of Christian Education at Escalon Presbyterian Church."



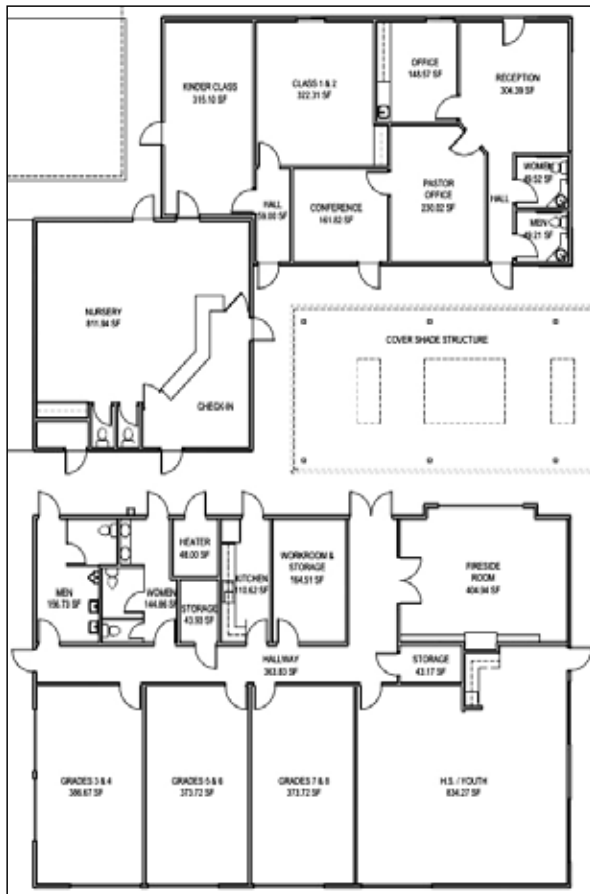
THIS IS NOT AN ERROR - THIS COLOR BAR IS SUPPOSED TO PRINT

THIS IS NOT AN ERROR - THIS COLOR BAR IS SUPPOSED TO PRING



WHAT IS THIS FOR?

- This campaign is intended to address ministry space needs for All-Church Ministry, Adult Ministry and Youth Ministry.
- Large Fellowship Space (4854 square feet) that doubles our current size for all-church gatherings and youth events.
 - High sixteen foot ceilings for natural light / large events
 - Modern ADA bathrooms with easy access from sanctuary
 - Large kitchen with storage that triples our existing size
- Faith Center Remodel that dedicates an entire wing for the Youth with Enhanced Security.
 - Double existing square footage of youth room
 - 3 dedicated classrooms for Sunday School/other meetings
 - ADA compliant remodeled bathrooms
- A nursery remodel that increases capacity while providing a more seamless and secure check-in process.



CORINNE THOMPSON
Capital Campaign Team

"It's exciting to see what is ahead for us in this new building program. I think of those who stepped forward over 100 years ago not knowing what the future would hold. Now it is our turn to step forward in faith with a gift for our kids now, for those who will come in the future, and for the entire community."



THIS IS NOT AN ERROR - THIS COLOR BAR IS SUPPOSED TO PRING

THIS IS NOT AN ERROR - THIS COLOR BAR IS SUPPOSED TO PRING



WHAT IS THE GOAL?

■ PHASE 1 GOAL : \$1.25 MILLION to \$1.35 MILLION

We are in the process of hiring a contractor to work with our architect to further reduce costs, in order to facilitate further remodeling or additional Master Plan options.

CONGREGATION
\$750,000-\$850,000

MATCHING GIFT
\$500,000

TOTAL
\$1,250,000-\$1,350,000



■ Matching Gifts

We have been blessed with a \$500,000 anonymous matching gift. Each dollar that you give will be matched up to \$1,000,000 total.

■ Giving Options

Our campaign has set a goal to be debt-free in four years. As you pray over your potential giving, please note that you can give monthly, quarterly or annually. If all you are able to give is a modest monthly sum, it is a gift to this church and a gift to God. Every gift matters. Every gift honors God.



RICK GUEVARA
Capital Campaign Team

"Our family and congregation have been so blessed. I am excited about the future! God has blessed us with a \$500,000 matching gift for the Capital Campaign. Your contribution is effectively doubled. I am looking forward to what we can accomplish together."



9/18/57



THIS IS NOT AN ERROR - THIS COLOR BAR IS SUPPOSED TO PRING

CAN WE DO THIS?

- **HISTORY OF ESCALON PRESBYTERIAN CHURCH**
- **1913 - EPC formed.** Worship services were held in Fisk Hall on Main Street until fire destroyed the building.
- **1915 - EPC purchased the former Escalon Elementary School** for use as a sanctuary (corner of Hwy 120 and First Street).
- **1958 - The Sanctuary was built and dedicated.**
- **1963 - 50 year celebration of EPC.**
- **1966 - The Faith Center was built and dedicated.**
- **1988 - The Office/Choir expansion was built and dedicated.**
- **2013 - 100 year celebration of EPC.**
- **2014 - Plans presented to congregation for ministry expansion.**
 - Fall of 2014 - our Church participated in a Congregational Assessment by the Goehner Group. The results of the assessment indicated the congregation is healthy and unified. The congregation is on board with the vision and the mission is clear.
 - The proposed project (*Fellowship Hall and remodeled Faith Center*) are seen as important to our future ministry. Our consultant highly recommended pursuing a Capital Campaign to meet these goals.
- **2015 - Forward in Faith Campaign begins.**



JERRY BARTON
Capital Campaign Co-Chair

"There have been big challenges in the past. This is our challenge and we should welcome it. We should make this happen. Let's do it!"



THIS IS NOT AN ERROR - THIS COLOR BAR IS SUPPOSED TO PRING

WHAT ARE YOUR NEXT STEPS?

■ PRAY

Read through the Forward in Faith Materials and pray through your potential four-year commitment to our ministry expansion.

■ CELEBRATION SUNDAY - MARCH 29

Join us on this Sunday as we gather together in the Faith Center after worship for lunch to hear for the final time the vision for our Capital Campaign. Pledge cards will be handed out at this time.

■ VICTORY SUNDAY - APRIL 19

On this Sunday we will receive your prayerfully considered pledges toward the Capital Campaign in a service of worship. Results will be announced a few weeks following.

